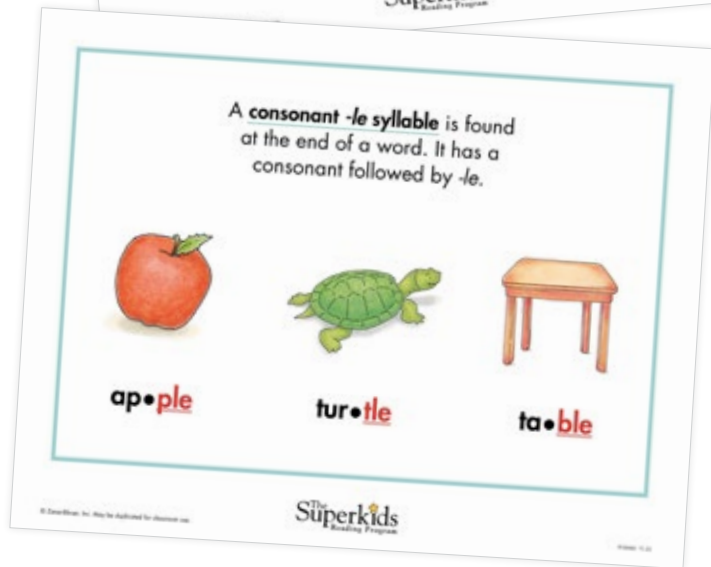
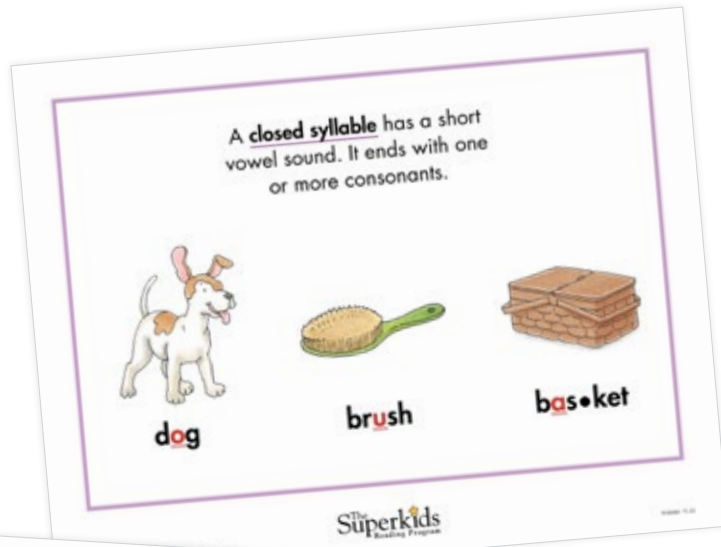


Six Syllable Types Printable Cards

A **syllable** is a word or word part with one vowel sound. These cards define the syllable types and provide a few examples of each one. Use them as visual aids as you practice syllabication with students.

This chart shows where to find the first introduction of a syllable type in a grade level of *The Superkids Reading Program*:

Syllable Type	Grade K	Grade 1	Grade 2
Closed syllable	Unit 5	Unit 1	Warm-Up Unit
Open syllable		Unit 6	Warm-Up Unit
VCe (Super e) syllable		Unit 6	Warm-Up Unit
Vowel team syllable		Unit 8	Warm-Up Unit
r-controlled syllable		Unit 4	Unit 4
Consonant -le syllable		Unit 3	Unit 2



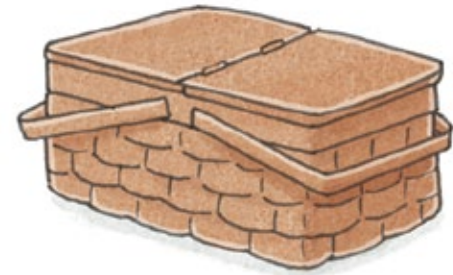
A closed syllable has a short vowel sound. It ends with one or more consonants.



dog

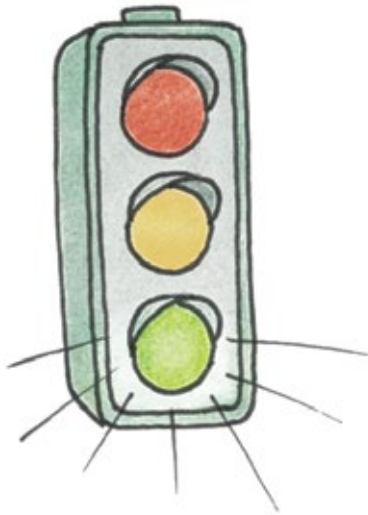


brush



bas•ket

An open syllable has a long vowel sound at the end of the syllable.



go

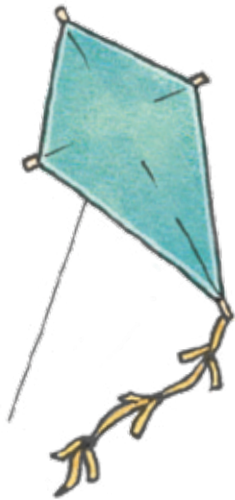


ti•ger



mu•sic

A VCe (Super e) syllable has a long vowel sound. A consonant and a silent e follow the vowel.



kite



smile



snow•flake

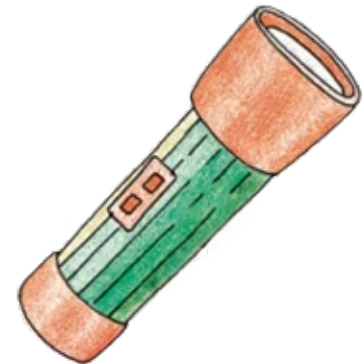
A vowel team syllable has a vowel sound spelled with two or more letters.



boat

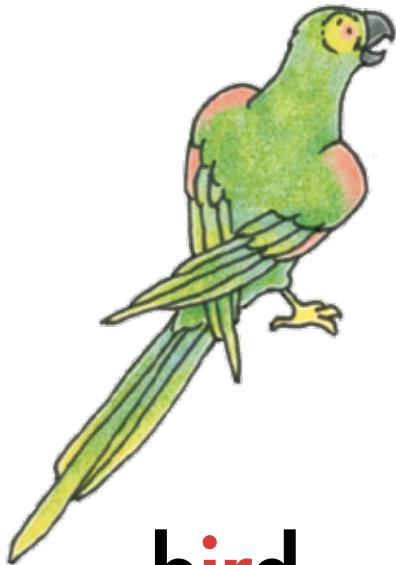


snail

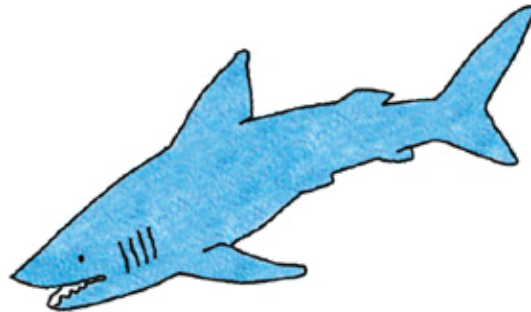


flash•light

An r-controlled syllable ends with a vowel and the letter *r*.



bird



shark

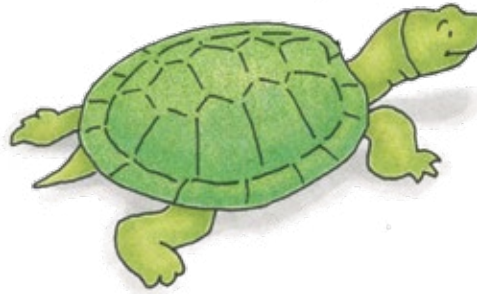


forty

A consonant -le syllable is found
at the end of a word. It has a
consonant followed by -le.



ap•ple



tur•tle



ta•ble